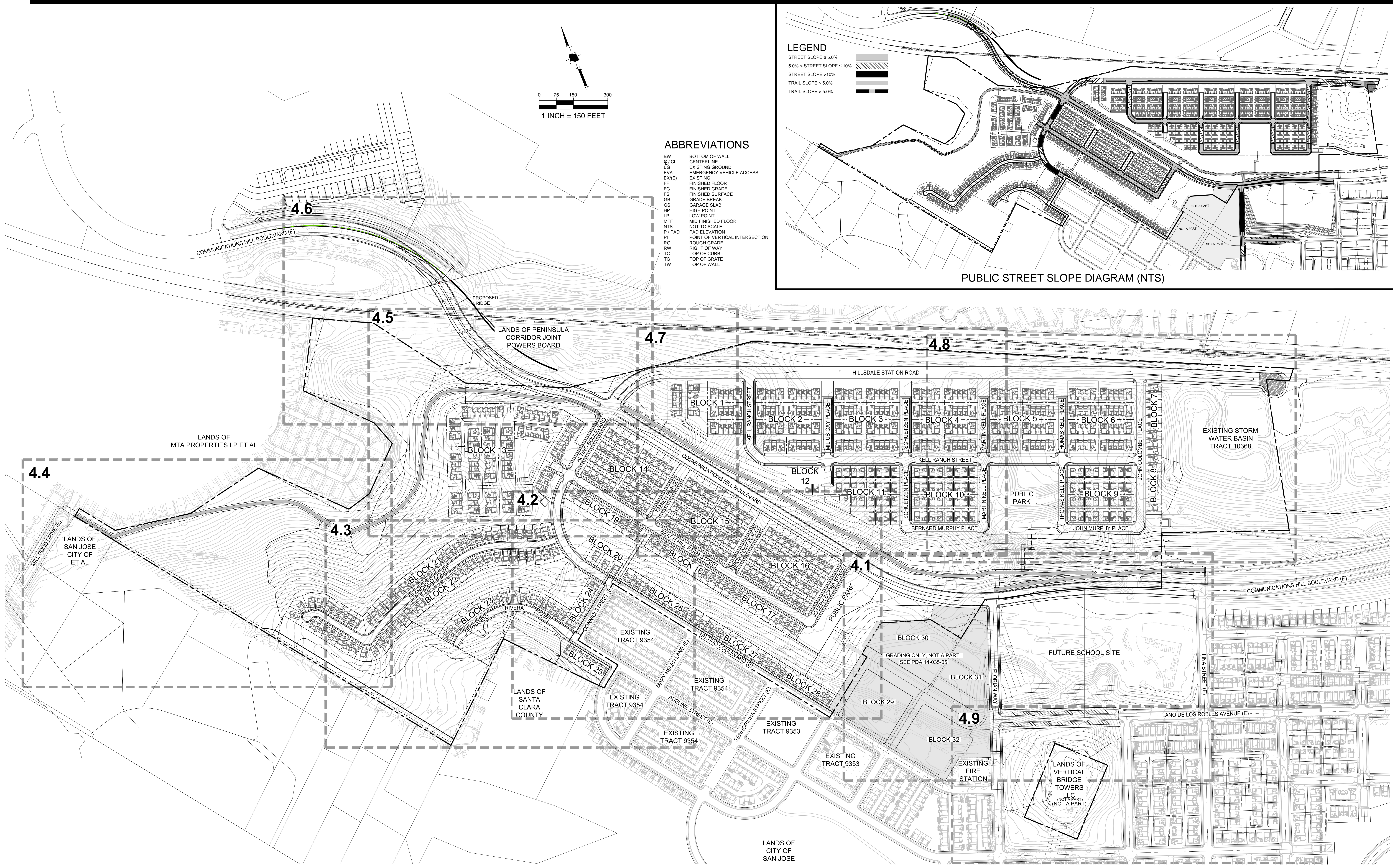
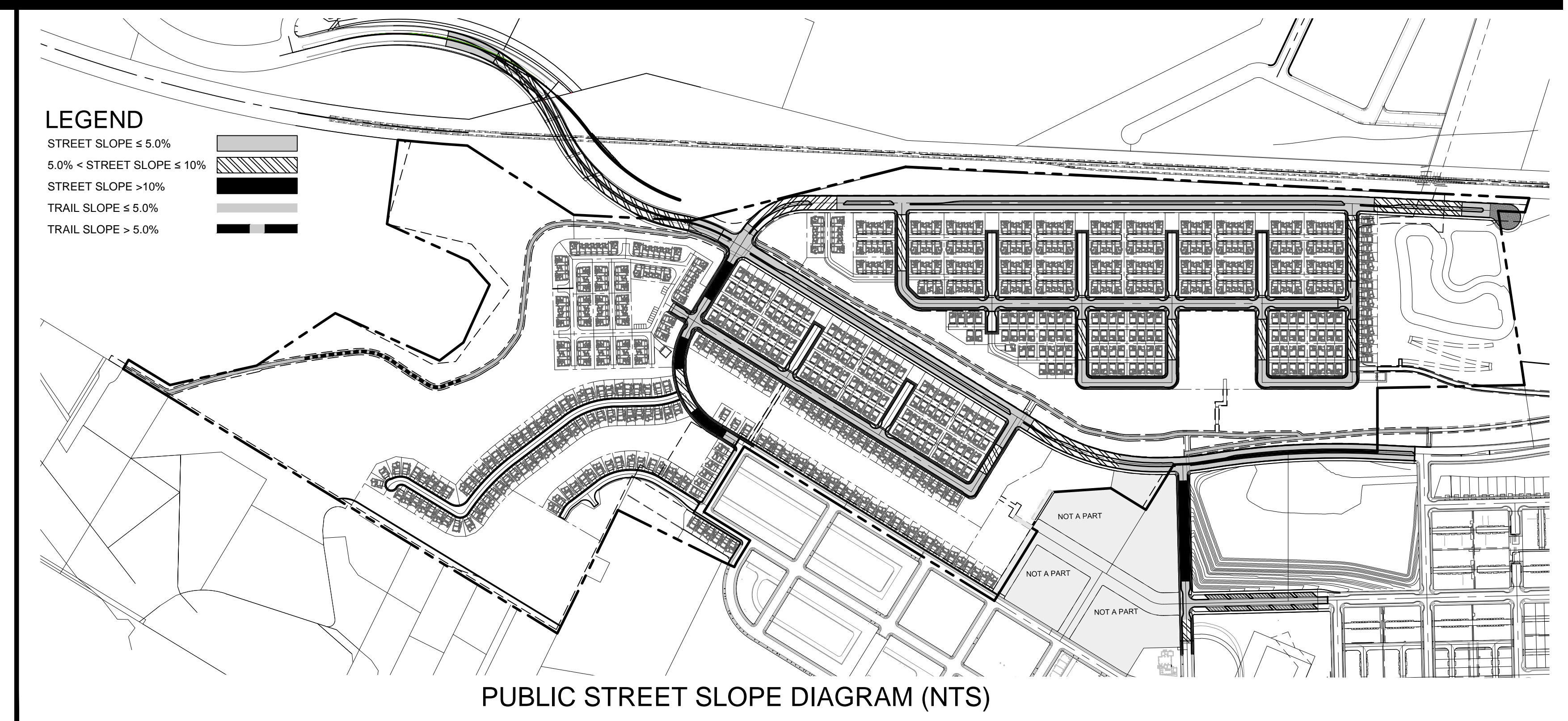


LEGEND

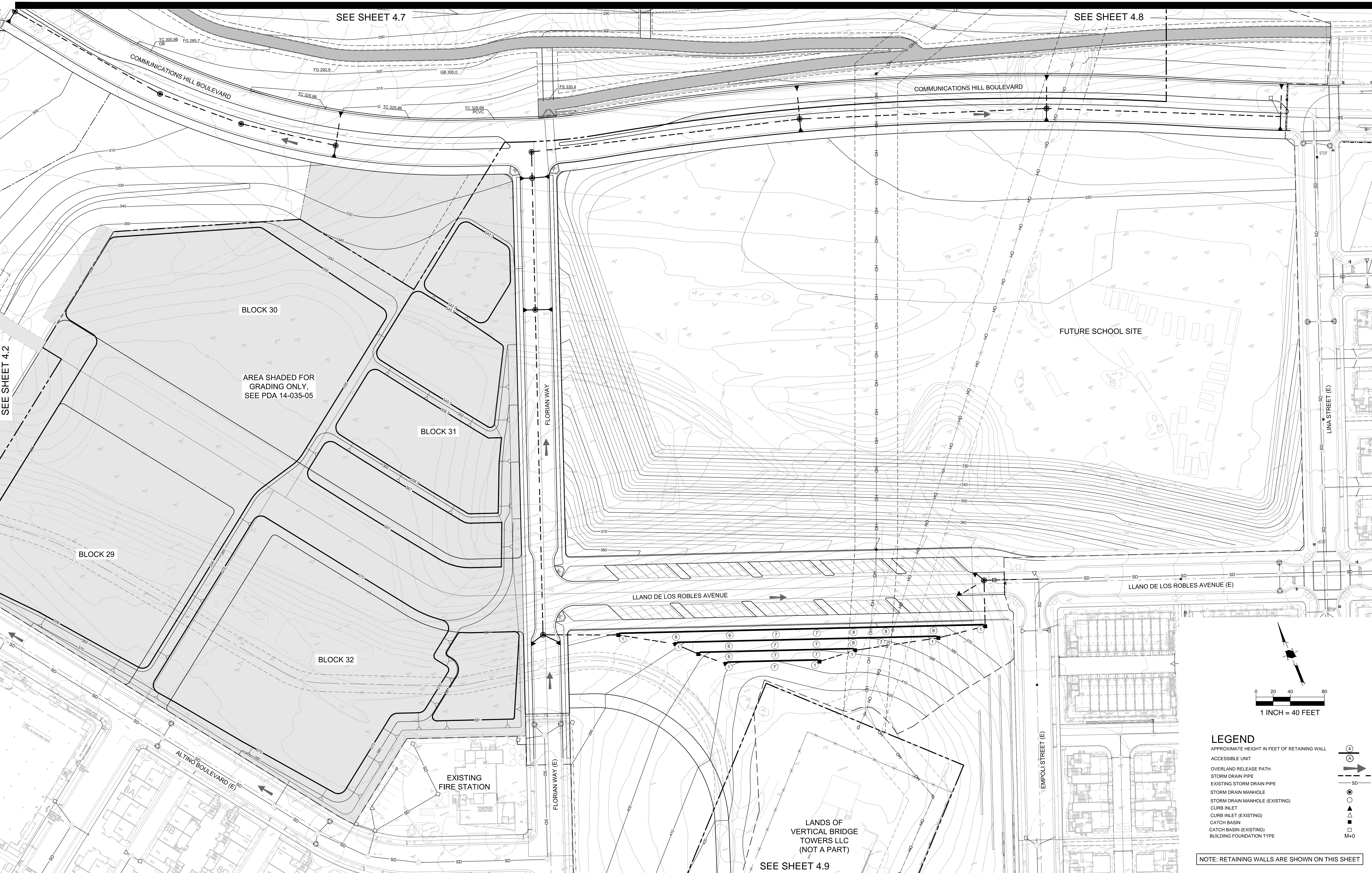
[Symbol]	STREET SLOPE ≤ 5.0%
[Symbol]	5.0% < STREET SLOPE ≤ 10%
[Symbol]	STREET SLOPE > 10%
[Symbol]	TRAIL SLOPE ≤ 5.0%
[Symbol]	TRAIL SLOPE > 5.0%

ABBREVIATIONS

BW	BOTTOM OF WALL
C / CL	CENTERLINE
EG	EXISTING GROUND
EVA	EMERGENCY VEHICLE ACCESS
EX(E)	EXISTING
FF	FINISHED FLOOR
FG	FINISHED GRADE
FS	FINISHED SURFACE
GB	GRADE BREAK
GS	GARAGE SLAB
HP	HIGH POINT
LP	LOW POINT
MIF	MID FINISHED FLOOR
NTS	NOT TO SCALE
P / PAD	PAD ELEVATION
PI	POINT OF VERTICAL INTERSECTION
RG	ROUGH GRADE
RW	RIGHT OF WAY
TC	TOP OF CURB
TG	TOP OF GRATE
TW	TOP OF WALL



PROJECT NO:	3636.80
CAD DWG FILE:	363680P.DWG
DESIGNED BY:	MM/JZ
DRAWN BY:	KV
CHECKED BY:	DW/ZEF
DATE:	APRIL 2, 2019
SCALE:	1" = 150'



SEE SHEET 4.2

SEE SHEET 4.7

SEE SHEET 4.8

AREA SHADED FOR GRADING ONLY, SEE PDA 14-035-05

BLOCK 30

BLOCK 31

BLOCK 29

BLOCK 32

EXISTING FIRE STATION

FUTURE SCHOOL SITE

FLORIAN WAY

FLORIAN WAY (E)

LLANO DE LOS ROBLES AVENUE

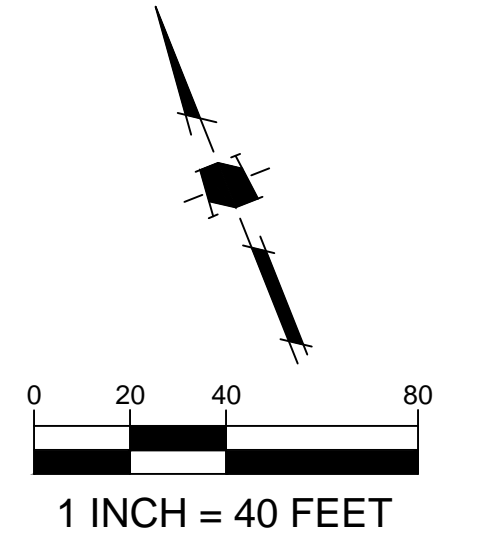
LLANO DE LOS ROBLES AVENUE (E)

LINA STREET (E)

EMPOLI STREET (E)

LANDS OF VERTICAL BRIDGE TOWERS LLC (NOT A PART)

SEE SHEET 4.9



LEGEND

- APPROXIMATE HEIGHT IN FEET OF RETAINING WALL
- ACCESSIBLE UNIT
- OVERLAND RELEASE PATH
- STORM DRAIN PIPE
- EXISTING STORM DRAIN PIPE
- STORM DRAIN MANHOLE
- STORM DRAIN MANHOLE (EXISTING)
- CURB INLET
- CURB INLET (EXISTING)
- CATCH BASIN
- CATCH BASIN (EXISTING)
- BUILDING FOUNDATION TYPE

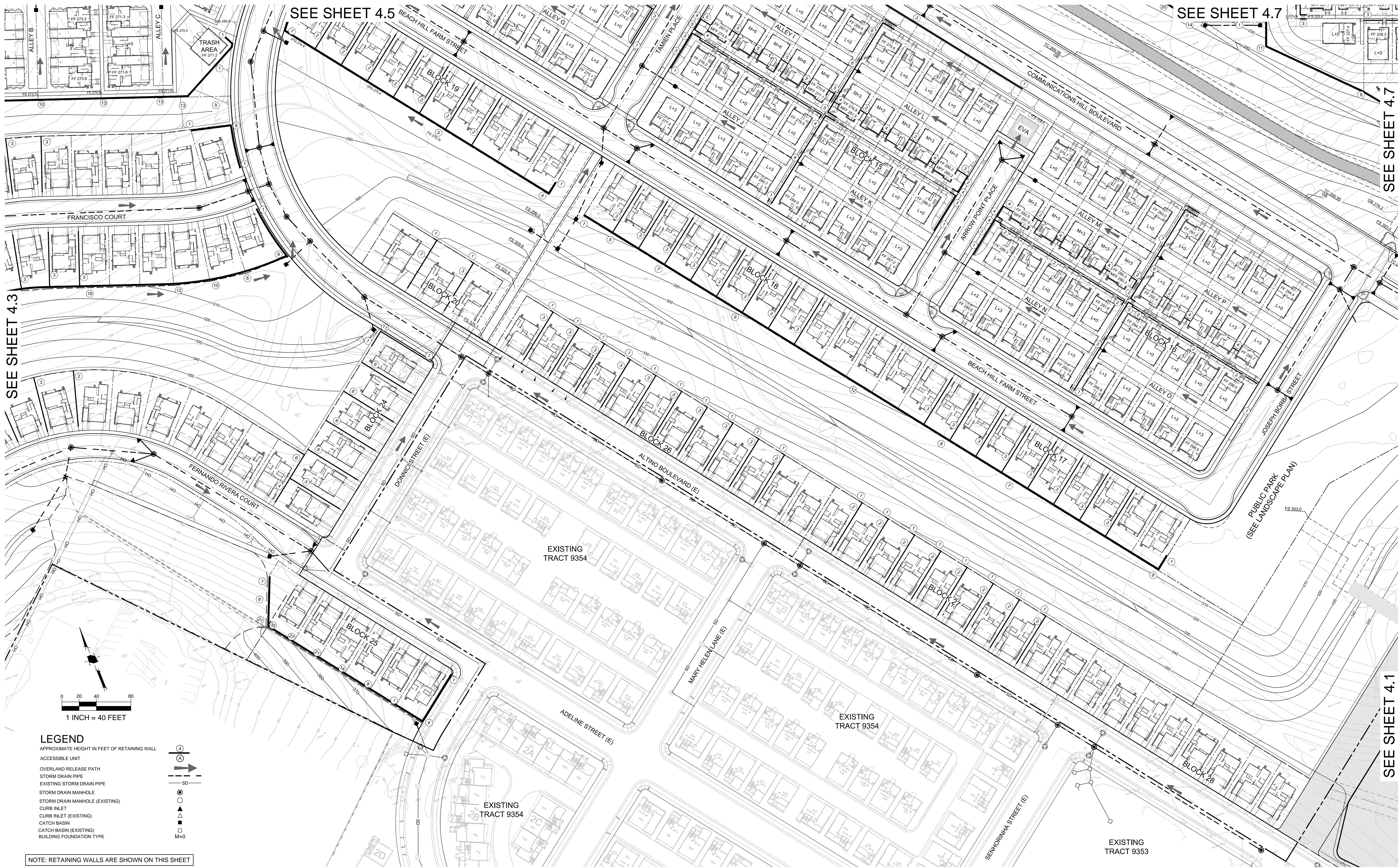
NOTE: RETAINING WALLS ARE SHOWN ON THIS SHEET



PLANNED DEVELOPMENT PERMIT AMENDMENT PDA14-035-06
COMMUNICATIONS HILL - PHASE 3 & 4

PROJECT NO:	3636.80
CAD DWG FILE:	363680GP.DWG
DESIGNED BY:	MM/JZ
DRAWN BY:	KV
CHECKED BY:	DW/ZEF
DATE:	APRIL 2, 2019
SCALE:	1" = 40'

GRADING, DRAINAGE AND WALLS LOCATION PLAN



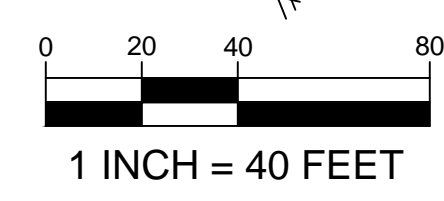
SEE SHEET 4.5

SEE SHEET 4.7

SEE SHEET 4.3

SEE SHEET 4.7

SEE SHEET 4.1



LEGEND

APPROXIMATE HEIGHT IN FEET OF RETAINING WALL

ACCESSIBLE UNIT

OVERLAND RELEASE PATH

STORM DRAIN PIPE

EXISTING STORM DRAIN PIPE

STORM DRAIN MANHOLE

STORM DRAIN MANHOLE (EXISTING)

CURB INLET

CURB INLET (EXISTING)

CATCH BASIN

CATCH BASIN (EXISTING)

BUILDING FOUNDATION TYPE

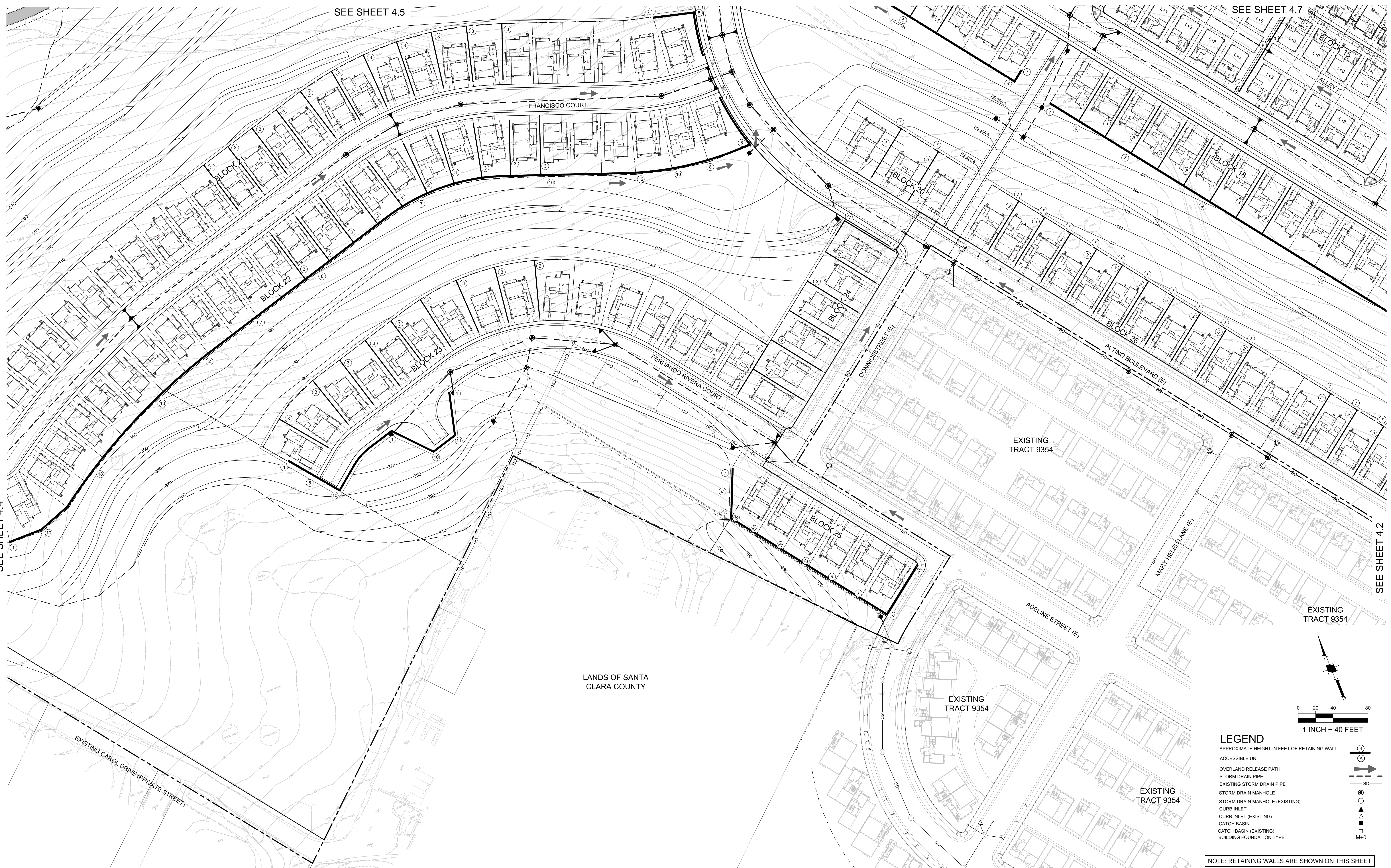
NOTE: RETAINING WALLS ARE SHOWN ON THIS SHEET



**PLANNED DEVELOPMENT
PERMIT AMENDMENT
PDA14-035-06
COMMUNICATIONS HILL - PHASE 3 & 4**

PROJECT NO:	3636.80
CAD DWG FILE:	363680P.DWG
DESIGNED BY:	MM/JZ
DRAWN BY:	KV
CHECKED BY:	DW/ZEF
DATE:	APRIL 2, 2019
SCALE:	1" = 40'

**GRADING, DRAINAGE AND
WALLS LOCATION PLAN**



SEE SHEET 4.5

SEE SHEET 4.7

SEE SHEET 4.4

SEE SHEET 4.2

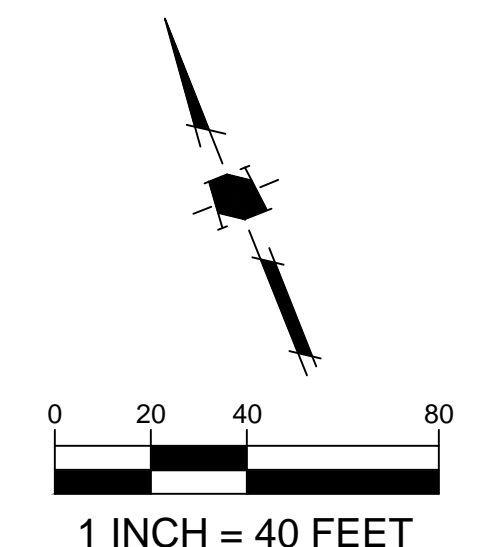
LANDS OF SANTA CLARA COUNTY

EXISTING TRACT 9354

EXISTING TRACT 9354

EXISTING TRACT 9354

EXISTING CAROL DRIVE (PRIVATE STREET)



LEGEND

- APPROXIMATE HEIGHT IN FEET OF RETAINING WALL
- ACCESSIBLE UNIT
- OVERLAND RELEASE PATH
- STORM DRAIN PIPE
- EXISTING STORM DRAIN PIPE
- STORM DRAIN MANHOLE
- STORM DRAIN MANHOLE (EXISTING)
- CURB INLET
- CURB INLET (EXISTING)
- CATCH BASIN
- CATCH BASIN (EXISTING)
- BUILDING FOUNDATION TYPE

NOTE: RETAINING WALLS ARE SHOWN ON THIS SHEET

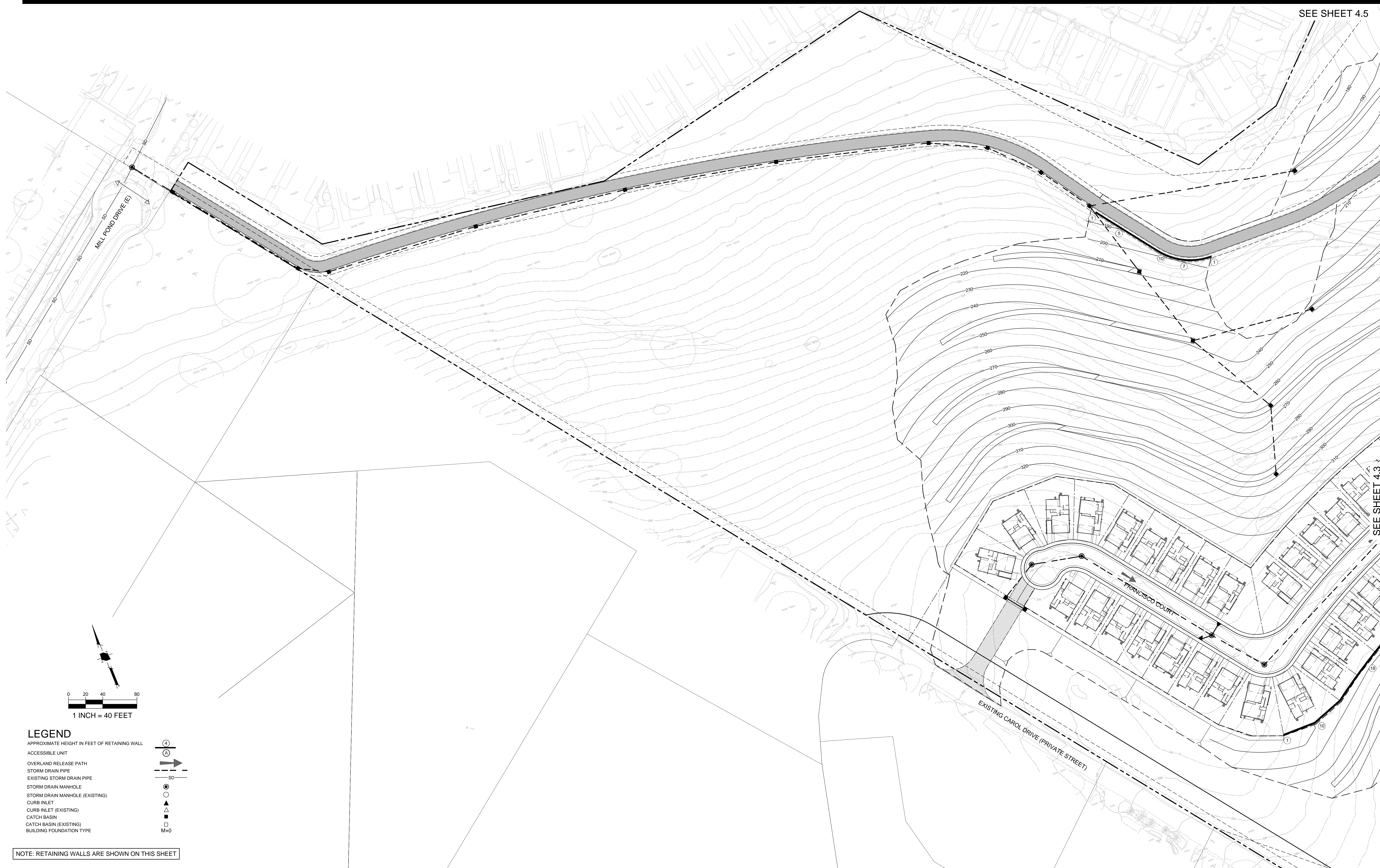


**PLANNED DEVELOPMENT
PERMIT AMENDMENT
PDA14-035-06
COMMUNICATIONS HILL - PHASE 3 & 4**

PROJECT NO:	3636.80	
CAD DWG FILE:	363680GP.DWG	
DESIGNED BY:	MM/JZ	
DRAWN BY:	KV	
CHECKED BY:	DW/ZEF	
DATE:	APRIL 2, 2019	
SCALE:	1" = 40'	
NO	DATE	DESCRIPTION

**GRADING, DRAINAGE AND
WALLS LOCATION PLAN**

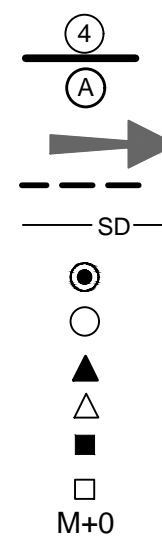
SEE SHEET 4.5



SEE SHEET 4.3

LEGEND

- APPROXIMATE HEIGHT IN FEET OF RETAINING WALL
- ACCESSIBLE UNIT
- OVERLAND RELEASE PATH
- STORM DRAIN PIPE
- EXISTING STORM DRAIN PIPE
- STORM DRAIN MANHOLE
- STORM DRAIN MANHOLE (EXISTING)
- CURB INLET
- CURB INLET (EXISTING)
- CATCH BASIN
- CATCH BASIN (EXISTING)
- BUILDING FOUNDATION TYPE



NOTE: RETAINING WALLS ARE SHOWN ON THIS SHEET

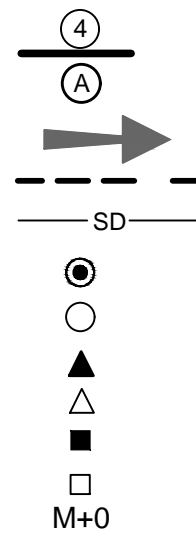


**PLANNED DEVELOPMENT
PERMIT AMENDMENT
PDA14-035-06
COMMUNICATIONS HILL - PHASE 3 & 4**

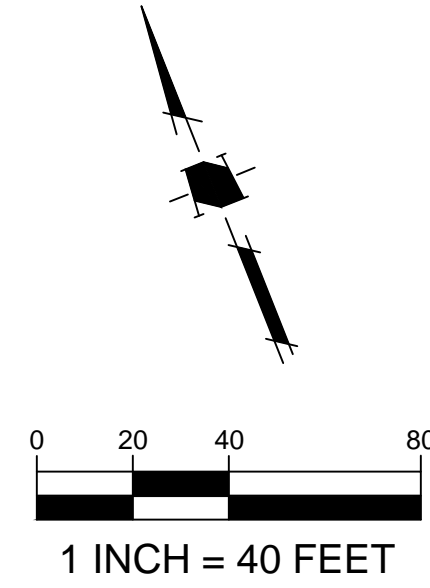
PROJECT NO:	3636.80	
CAD DWG FILE:	363680GP.DWG	
DESIGNED BY:	MM/JZ	
DRAWN BY:	KV	
CHECKED BY:	DW/ZEF	
DATE:	APRIL 2, 2019	
SCALE:	1" = 40'	
NO	DATE	DESCRIPTION
12/20/19		PER CITY COMMENTS

**GRADING, DRAINAGE AND
WALLS LOCATION PLAN**

- LEGEND**
- APPROXIMATE HEIGHT IN FEET OF RETAINING WALL
 - ACCESSIBLE UNIT
 - OVERLAND RELEASE PATH
 - STORM DRAIN PIPE
 - EXISTING STORM DRAIN PIPE
 - STORM DRAIN MANHOLE
 - STORM DRAIN MANHOLE (EXISTING)
 - CURB INLET
 - CURB INLET (EXISTING)
 - CATCH BASIN
 - CATCH BASIN (EXISTING)
 - BUILDING FOUNDATION TYPE



NOTE: RETAINING WALLS ARE SHOWN ON THIS SHEET



SEE SHEET 4.4

SEE SHEET 4.6

SEE SHEET 4.3

SEE SHEET 4.2

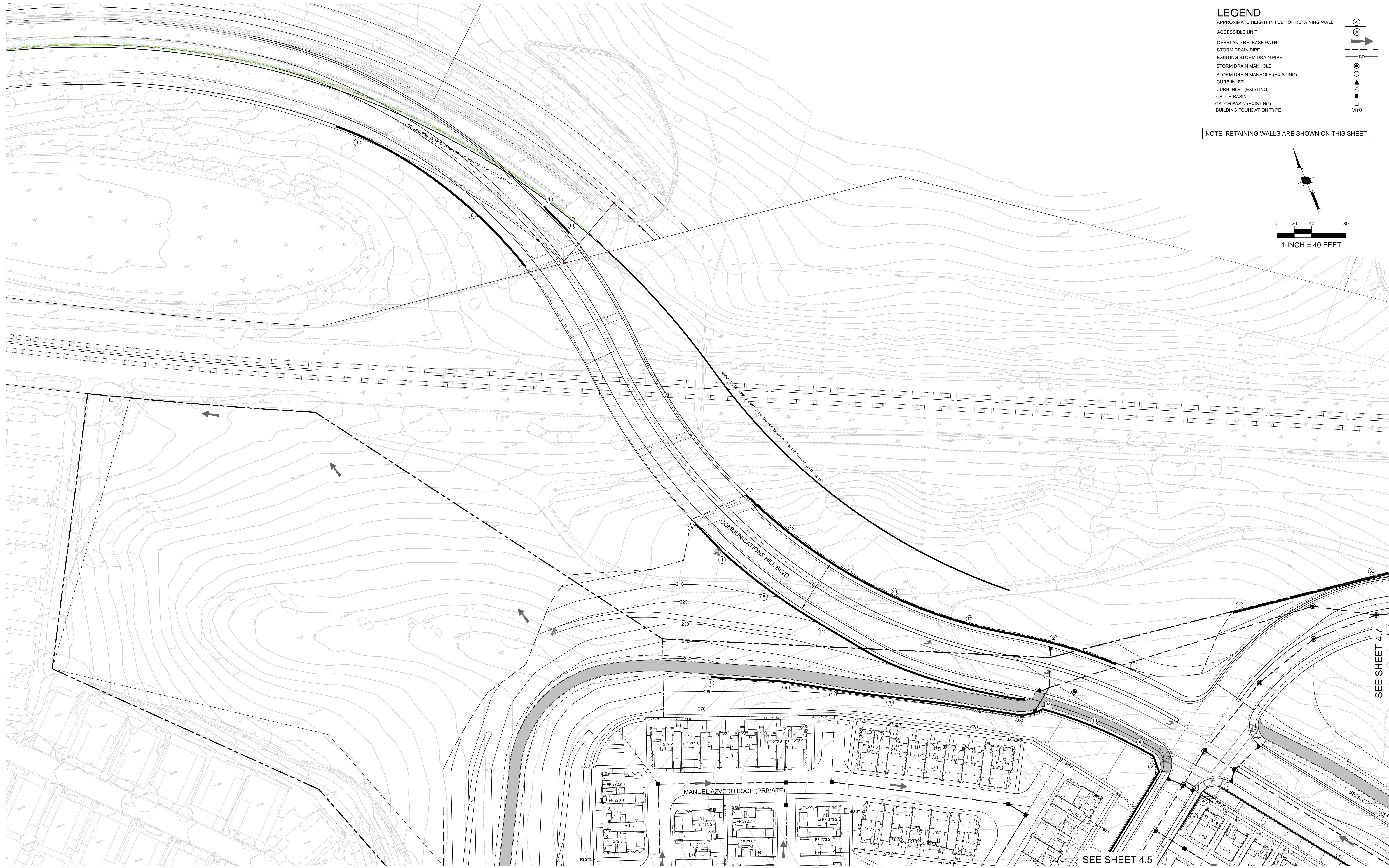
SEE SHEET 4.7



**PLANNED DEVELOPMENT
PERMIT AMENDMENT
PDA14-035-06
COMMUNICATIONS HILL - PHASE 3 & 4**

PROJECT NO:	3636.80	
CAD DWG FILE:	363680P.DWG	
DESIGNED BY:	MM/JZ	
DRAWN BY:	KV	
CHECKED BY:	DW/ZEF	
DATE:	APRIL 2, 2019	
SCALE:	1" = 40'	
NO	DATE	DESCRIPTION
12/20/19		PER CITY COMMENTS

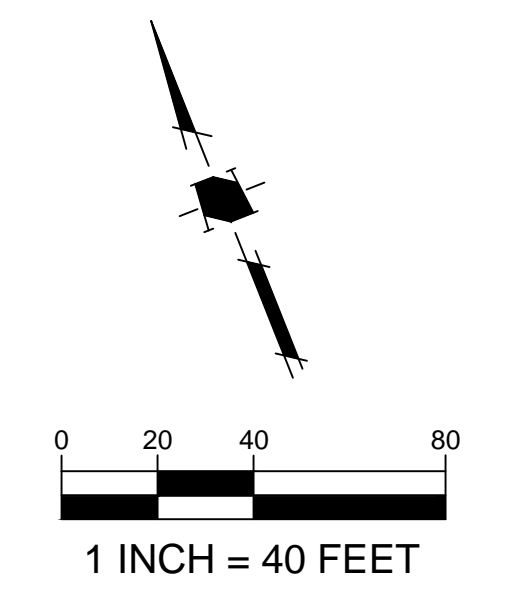
**GRADING, DRAINAGE AND
WALLS LOCATION PLAN**



LEGEND

- APPROXIMATE HEIGHT IN FEET OF RETAINING WALL
- ACCESSIBLE UNIT
- OVERLAND RELEASE PATH
- STORM DRAIN PIPE
- EXISTING STORM DRAIN PIPE
- STORM DRAIN MANHOLE
- STORM DRAIN MANHOLE (EXISTING)
- CURB INLET
- CURB INLET (EXISTING)
- CATCH BASIN
- CATCH BASIN (EXISTING)
- BUILDING FOUNDATION TYPE

NOTE: RETAINING WALLS ARE SHOWN ON THIS SHEET



SEE SHEET 4.7

SEE SHEET 4.5



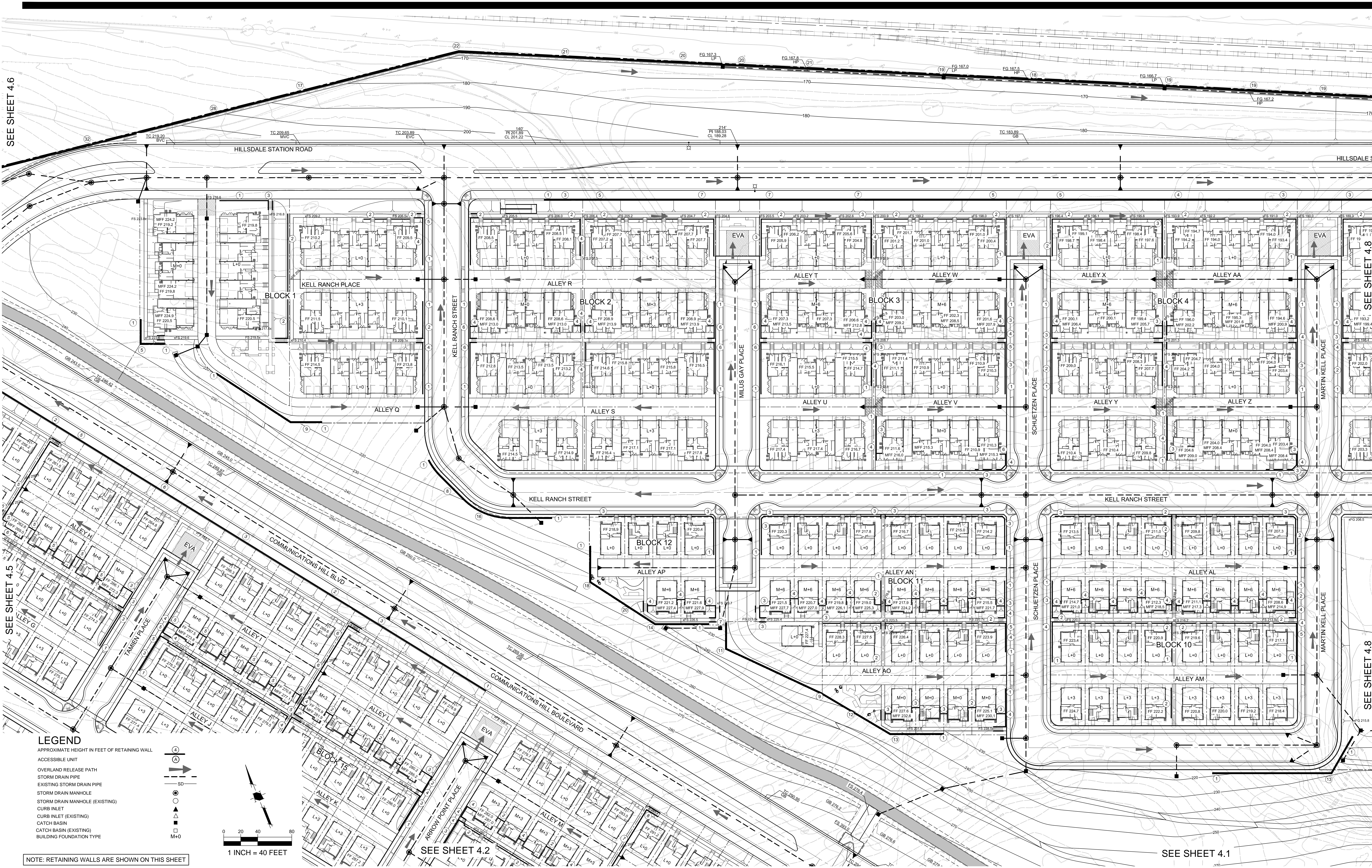
**PLANNED DEVELOPMENT
PERMIT AMENDMENT
PDA14-035-06
COMMUNICATIONS HILL - PHASE 3 & 4**

PROJECT NO:	3636.80
CAD DWG FILE:	363680GP.DWG
DESIGNED BY:	MM/JZ
DRAWN BY:	KV
CHECKED BY:	DW/ZEF
DATE:	APRIL 2, 2019
SCALE:	1" = 40'

**GRADING, DRAINAGE AND
WALLS LOCATION PLAN**

SEE SHEET 4.6

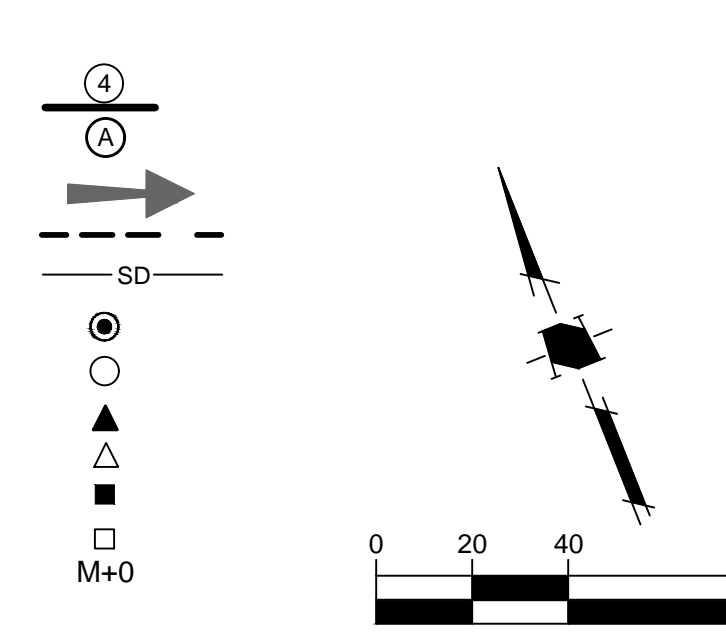
SEE SHEET 4.8



SEE SHEET 4.5

SEE SHEET 4.8

- LEGEND**
- APPROXIMATE HEIGHT IN FEET OF RETAINING WALL
 - ACCESSIBLE UNIT
 - OVERLAND RELEASE PATH
 - STORM DRAIN PIPE
 - EXISTING STORM DRAIN PIPE
 - STORM DRAIN MANHOLE
 - STORM DRAIN MANHOLE (EXISTING)
 - CURB INLET
 - CURB INLET (EXISTING)
 - CATCH BASIN
 - CATCH BASIN (EXISTING)
 - BUILDING FOUNDATION TYPE



SEE SHEET 4.2

SEE SHEET 4.1

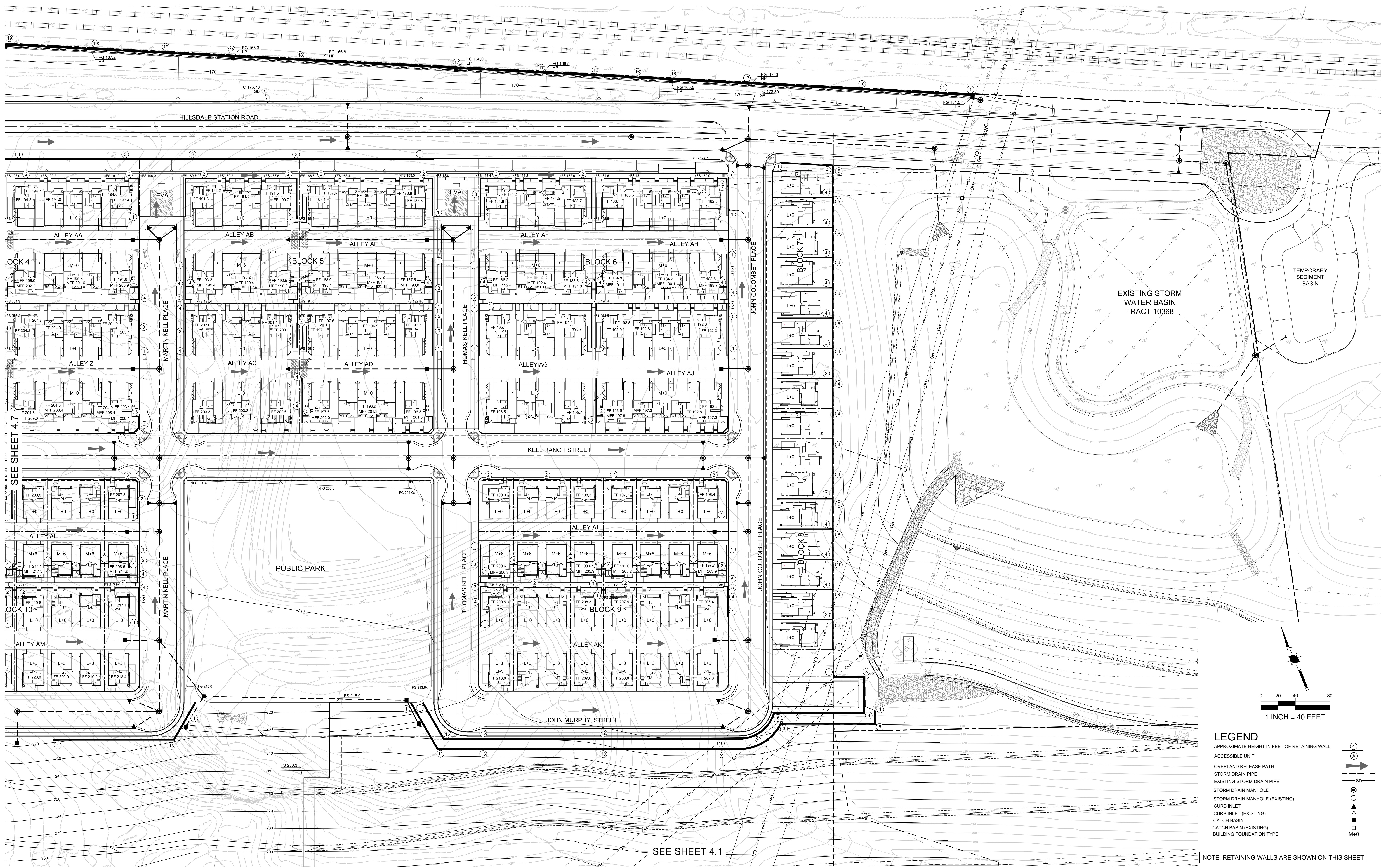
NOTE: RETAINING WALLS ARE SHOWN ON THIS SHEET



**PLANNED DEVELOPMENT
PERMIT AMENDMENT
PDA14-035-06
COMMUNICATIONS HILL - PHASE 3 & 4**

PROJECT NO:	3636.80	
CAD DWG FILE:	363680P.DWG	
DESIGNED BY:	MM/JZ	
DRAWN BY:	KV	
CHECKED BY:	DW/ZEF	
DATE:	APRIL 2, 2019	
SCALE:	1" = 40'	
NO.	DATE	DESCRIPTION

**GRADING, DRAINAGE AND
WALLS LOCATION PLAN**



LEGEND

- APPROXIMATE HEIGHT IN FEET OF RETAINING WALL
- ACCESSIBLE UNIT
- OVERLAND RELEASE PATH
- STORM DRAIN PIPE
- EXISTING STORM DRAIN PIPE
- STORM DRAIN MANHOLE
- STORM DRAIN MANHOLE (EXISTING)
- CURB INLET
- CURB INLET (EXISTING)
- CATCH BASIN
- CATCH BASIN (EXISTING)
- BUILDING FOUNDATION TYPE

NOTE: RETAINING WALLS ARE SHOWN ON THIS SHEET

SEE SHEET 4.7

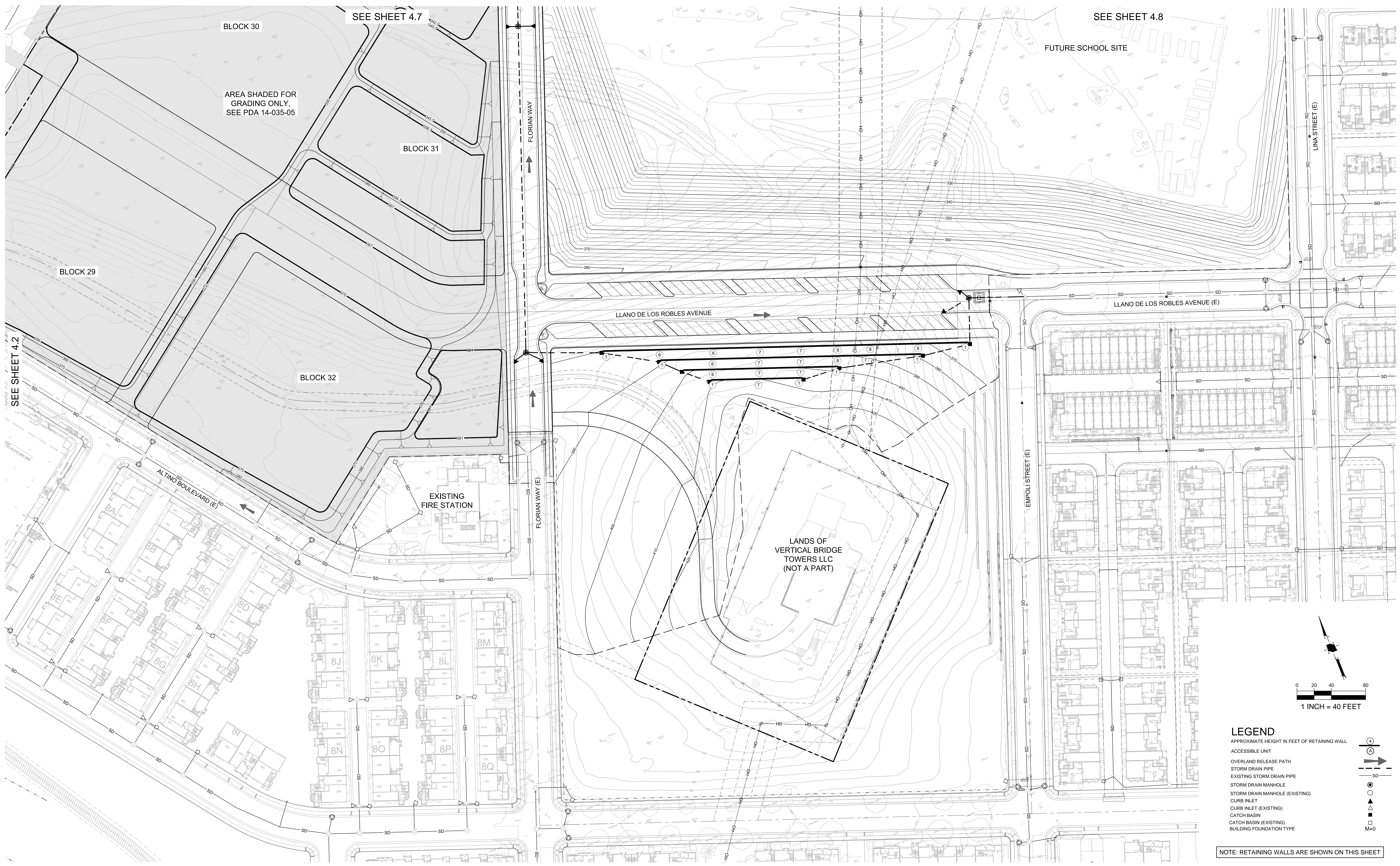
SEE SHEET 4.1



**PLANNED DEVELOPMENT
PERMIT AMENDMENT
PDA14-035-06
COMMUNICATIONS HILL - PHASE 3 & 4**

PROJECT NO:	3636.80
CAD DWG FILE:	363680P.DWG
DESIGNED BY:	MM/JZ
DRAWN BY:	KV
CHECKED BY:	DW/ZEF
DATE:	APRIL 2, 2019
SCALE:	1" = 40'

**GRADING, DRAINAGE AND
WALLS LOCATION PLAN**



SEE SHEET 4.2

SEE SHEET 4.7

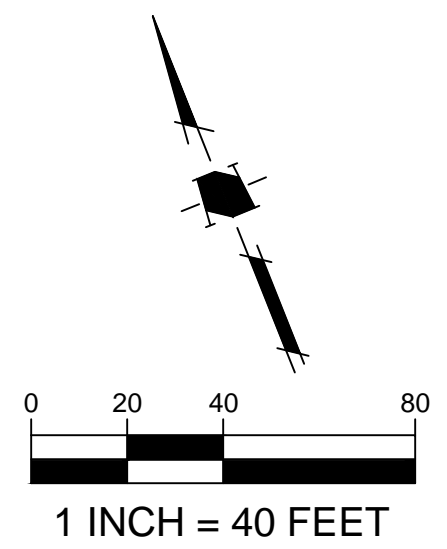
SEE SHEET 4.8

AREA SHADED FOR GRADING ONLY, SEE PDA 14-035-05

FUTURE SCHOOL SITE

EXISTING FIRE STATION

LANDS OF VERTICAL BRIDGE TOWERS LLC (NOT A PART)



LEGEND

- APPROXIMATE HEIGHT IN FEET OF RETAINING WALL
- ACCESSIBLE UNIT
- OVERLAND RELEASE PATH
- STORM DRAIN PIPE
- EXISTING STORM DRAIN PIPE
- STORM DRAIN MANHOLE
- STORM DRAIN MANHOLE (EXISTING)
- CURB INLET
- CURB INLET (EXISTING)
- CATCH BASIN
- CATCH BASIN (EXISTING)
- BUILDING FOUNDATION TYPE

NOTE: RETAINING WALLS ARE SHOWN ON THIS SHEET



PLANNED DEVELOPMENT PERMIT AMENDMENT
PDA14-035-06
COMMUNICATIONS HILL - PHASE 3 & 4

PROJECT NO:	3636.80
CAD DWG FILE:	363680GP.DWG
DESIGNED BY:	MM/JZ
DRAWN BY:	KV
CHECKED BY:	DW/ZEF
DATE:	APRIL 2, 2019
SCALE:	1" = 40'

GRADING, DRAINAGE AND WALLS LOCATION PLAN

4.9