



# COMMUNICATIONS HILL PARKLAND FACILITIES EXHIBIT

*San Jose, California*

*January 2015*



- 1 Vieira Park (1.5 ac)**  
Children's Play Area  
Picnic Tables
- 2 Waterford Park (2.8 ac)**  
Children's Play Areas  
Picnic Tables  
BBQ  
Exercise Course
- 3 Richardson Park (2.0 ac)**  
Children's Play Areas  
Picnic Tables  
BBQ  
Exercise Course
- 4 Canoas Park / School (8.2 ac)**  
Children's Play Areas  
Picnic Tables  
BBQ  
Open Play Fields  
Tennis Courts (2)  
Basketball Courts  
Horseshoe Pit
- 5 Meadows Park (4.6 ac)**  
Children's Play Areas  
Picnic Tables  
BBQ  
Open Lawn Area
- 6 Parkview Park (2.5 ac)**  
Children's Play Areas  
Picnic Tables  
BBQ  
Open Lawn Area
- 7 Solari Park (8.3 ac)**  
Children's Play Areas  
Picnic Tables  
BBQ  
Open Lawn Area  
Tennis Courts (4)  
Basketball Courts  
Softball Fields  
Soccer Field (Permit Use)
- 8 Parkview Park II / School (2.6 / 9.9 ac)**  
Children's Play Areas  
Picnic Tables  
Open Lawn Area  
Open Play Field  
Basketball Courts
- 9 Rachel Carson Elementary School (8.7 ac)**  
Children's Play Areas  
Open Lawn Area  
Open Play Field  
Basketball Courts
- 10 Rubino Park (3.3 ac)**  
Children's Play Areas  
BBQ  
Picnic Tables  
Open Lawn Area  
Basketball Court  
Trail Access
- 11 Guadalupe River Trail (423 ac)  
(Future Public Park now being planned)**  
Multi-use Trails



- 12 Roy Avenue Park (1 ac)**  
Children's Play Area  
Children's Water Play Feature  
Picnic Tables  
Open Lawn Area  
Trail Access

- 13 Terrell Park / School (5.4 / 10.5 ac)**  
Children's Play Areas  
Picnic Tables  
BBQ  
Open Lawn Area  
Open Play Field  
Basketball Courts

- 14 Andrew P. Hill High School (34 ac)**  
Open Lawn Area  
Open Play Field  
Softball / Baseball Fields  
Basketball Courts  
Running Track

- 15 Coyote Creek Parkchain (534 ac)**  
Multi-use Trails

- Communications Hill  
Potential Amenities**
- Children's Play Areas
  - BBQs
  - Picnic Tables
  - Open Lawn Play Areas
  - Passive Lawn Areas
  - Multi-use Trail Access
  - Par-course Exercise Circuits
  - View Gardens
  - Shade Structures
  - Gazebos
  - Amphitheater
  - Scenic Overlooks
  - Bocce Courts
  - Sand Volleyball
  - Climbing Walls
  - Hillside Slides

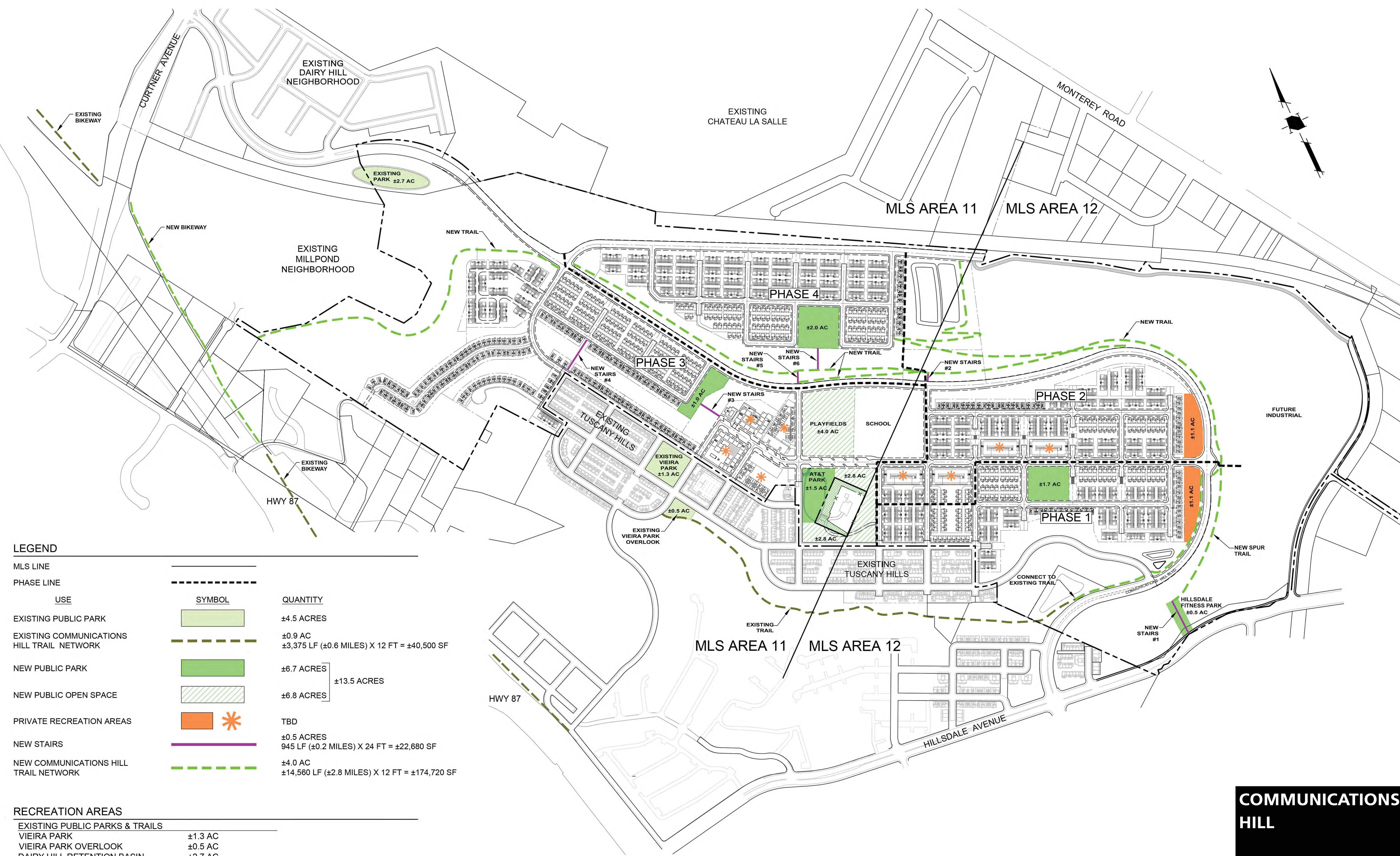
- LEGEND**
- Communications Hill Project Area
  - Public Park / Open Space
  - Future Public Park
  - School Site
  - Transit Station
  - HWY 87 Bikeway

# FACILITIES CONTEXT

**COMMUNICATIONS HILL**

PARKLAND FACILITIES EXHIBIT

JANUARY 2015



**LEGEND**

USE	SYMBOL	QUANTITY
MLS LINE	—	
PHASE LINE	- - -	
EXISTING PUBLIC PARK	[Light Green Box]	±4.5 ACRES
EXISTING COMMUNICATIONS HILL TRAIL NETWORK	[Dashed Green Line]	±0.9 AC ±3,375 LF (±0.6 MILES) X 12 FT = ±40,500 SF
NEW PUBLIC PARK	[Green Box]	±6.7 ACRES
NEW PUBLIC OPEN SPACE	[Hatched Box]	±6.8 ACRES ±13.5 ACRES
PRIVATE RECREATION AREAS	[Orange Box with Star]	TBD
NEW STAIRS	[Purple Line]	±0.5 ACRES 945 LF (±0.2 MILES) X 24 FT = ±22,680 SF
NEW COMMUNICATIONS HILL TRAIL NETWORK	[Dashed Green Line]	±4.0 AC ±14,560 LF (±2.8 MILES) X 12 FT = ±174,720 SF

**RECREATION AREAS**

EXISTING PUBLIC PARKS & TRAILS	
VIEIRA PARK	±1.3 AC
VIEIRA PARK OVERLOOK	±0.5 AC
DAIRY HILL RETENTION BASIN	±2.7 AC
COMMUNICATIONS HILL TRAIL	±1.5 AC
	±6.0 AC
PROPOSED RECREATION AREAS	
BLOCK 10 PARK	±2.0 AC
BLOCK 34 AT&T PARK	±4.3 AC
BLOCK 51 PARK	±1.7 AC
BLOCK 63 PARK	±1.0
COMMUNICATIONS HILL TRAIL	±4.0 AC
HILLSDALE PARK	±0.5 AC
	±13.5 AC

# EXISTING & FUTURE PUBLIC RECREATION AREAS

**COMMUNICATIONS HILL**

PARKLAND FACILITIES EXHIBIT

JANUARY 2015



**(A) WILLIAM LEWIS MANLY PARK \***  
(SOUTHERN RECTANGLE PARK, PHASE I)

**Area: 1.7 Ac**

Possible Amenities:

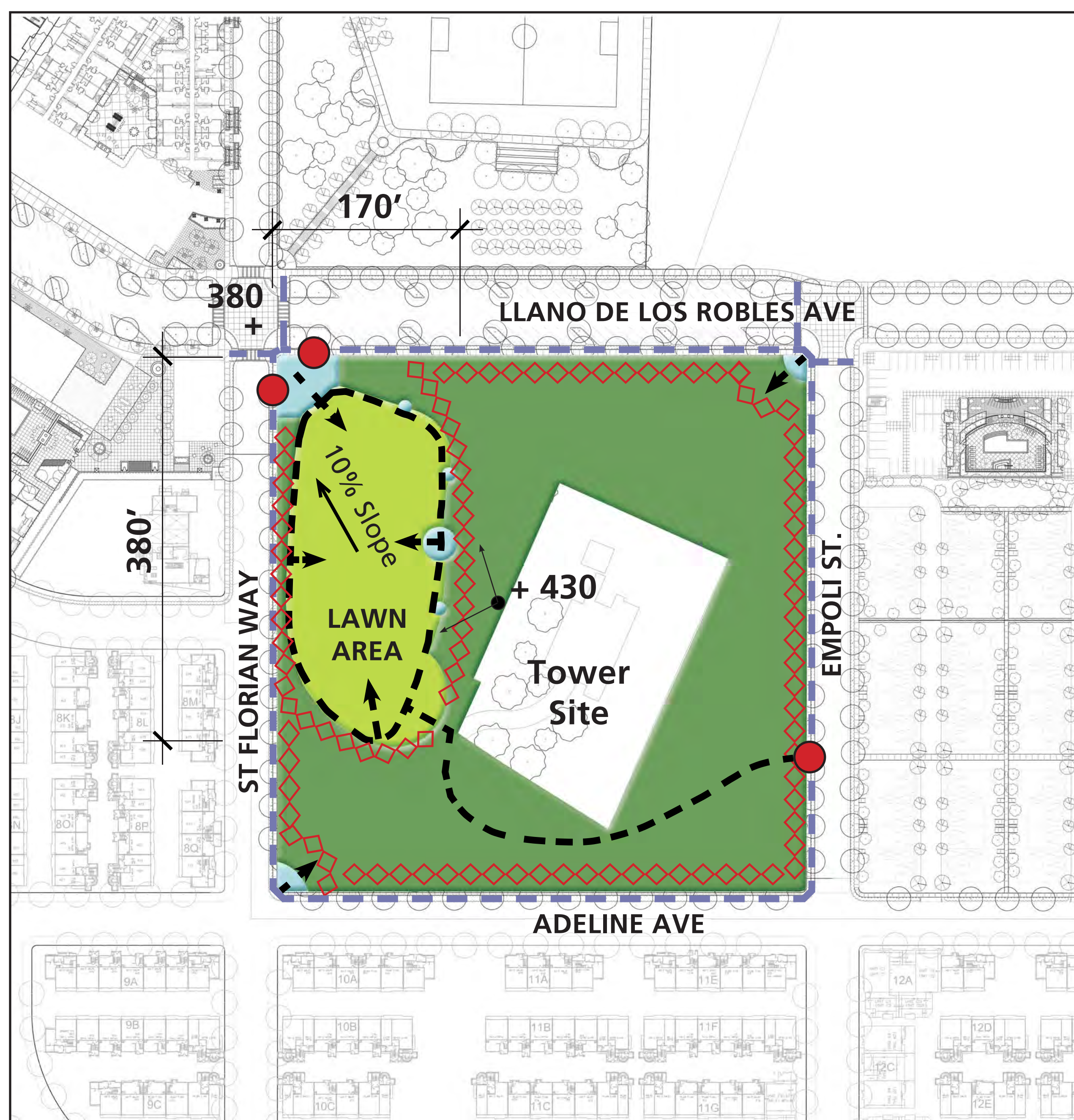
- Small Seating/Gathering Plazas
- Play Equipment Area (ages 2-5)
- Play Equipment Area (ages 6-12)
- Bocce Courts
- Formal Garden Beds
- Open Play Lawn
- Sand Volleyball Courts
- Climbing Wall
- BBQ Areas

Narrative:

The diverse housing products around this park suggest a range of potential users requiring a range of amenities. From the condominium tower to the North, adjacent single family homes, and townhomes, the full demographic spectrum in the vicinity would likely be represented and populating this neighborhood park. Therefore it would be beneficial to provide a mix of active, passive, children's play areas, and programmed outdoor recreation spaces designed in concert with one another.

As the park is surrounded by housing, consideration should be given for noise, both type and frequency, access and circulation, and park perimeter uses.

Due to the location of this park, a relatively flat, open play area is possible with creative grading measures and could be utilized here to the greatest extent possible as this would be a luxury given the topography of the overall development.



**(B) RANCHO SAN JUAN BAUTISTA PARK \***  
(TOWER PARK, PHASE III)

**Area: 1.5 Ac**

Possible Amenities:

- Amphitheater
- Community Plaza
- Small Corner Plazas/Seating Areas
- Par Course/Trail Circuit
- Open Lawn Play/Gather Area
- Overlook/Interpretive Signage
- Olive Grove

Narrative:

Proximity to the proposed Village Center suggests a community gathering approach as much as feasible to this park -- creating a space adjacent to the retail area where assembly and gathering can occur. The topography of the site lends to overlooks, parcourse exercise activity, and passive, banked-lawn gathering spaces where available. Flat lawn areas and programmed recreation activity would most likely not be feasible in this park.

An access road to a small parking area could provide accessible use of overlook activity near the top of the park where otherwise prohibitive due to slopes and stairs. Interpretive signage along the overlook and upper park area circulation could highlight the area's 'story'.

There are opportunities at the lower grade corners of the park to create small plazas for seating and gathering.



**(C) MARGARET KELL PARK (PHASE IV) \***

**Area: 2.2 Ac**

Possible Amenities:

- Open Lawn Play Area
- Passive Lawn Play Area
- Hillside Slides
- Rock Garden Play Area
- Play Equipment Area (ages 6-12)
- Par Course
- Gazebo Viewing/Gathering Area
- BBQ Areas
- Interpretive Signage

Narrative:

This park is surrounded by single family homes and townhomes and therefore is reasonable to expect adjacent users with children. Several programmed and informal children's play areas would benefit the neighboring users and positively activate this park. To the greatest extent possible, an open, flexible lawn area could supplement play and gathering areas.

The park site's southern boundary is the foot of steep hillside. This presents opportunity for creative grading measures that result in park amenities at that edge. This also lends to good viewsheds looking up at the hillside from the park's passive spaces.

As this park is also served by a stair from the trail system and Communications Hill Boulevard up above, it is reasonable to assume that a contingent of active, exercise type uses would occur with the stair's interface.

**\* New Rec Area and Street Names Pending - not formally approved by Council**

**LEGEND**

- ACTIVE AREA
- BUFFER ZONE
- PASSIVE AREA
- CHILDREN'S PLAY AREA
- EXERCISE AREA
- PARK CIRCULATION
- PUBLIC CIRCULATION
- POINT OF ENTRANCE
- PROHIBITIVE GRADES
- VIEW OPPORTUNITIES



KEY MAP  
N.T.S.

**PARK & OPEN SPACE AREAS**

**COMMUNICATIONS HILL**

**PARKLAND FACILITIES EXHIBIT**

JANUARY 2015



**(D) BLOCK 63 PARK (PHASE III)**

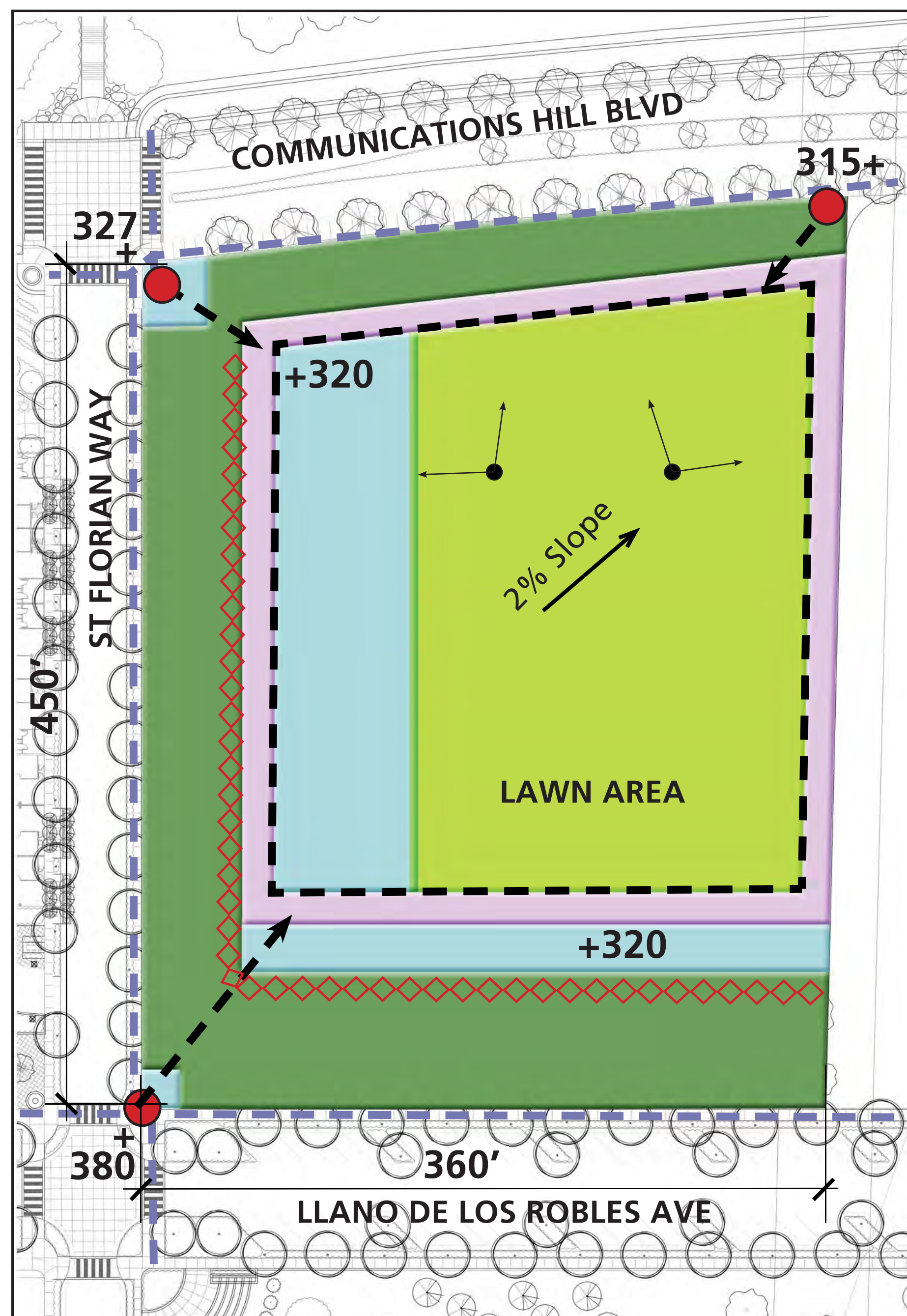
Area: 1.0 Ac

- Possible Amenities:
- Par Course/Trail Circuit
  - Open Lawn Play Area
  - Shade Structure/Viewing Area
  - Play Equipment Area (ages 2-5)
  - Play Equipment Area (ages 6-12)
  - Interpretive Signage

Narrative: Situated at the terminus of 'Main Street', adjacent to the Village Center this park space is at the bottom of steep topography and is bound by single family homes and Communications Hill Blvd. Generous children's play areas both programmed and informal could serve the neighborhood's users.

Being directly accessed by the Village Center stairs, an exercise component within the park would likely serve the active community recreating on the stairs and along Communications Hill Blvd. Spaces for stretching, stationary workouts, and parcourse elements along a loop in the park or next to the stairs could be placed away from direct proximity to homes.

An opportunity exists for a relatively flat, open play lawn area for all uses, buffered from Communications Hill Blvd. by planting and/or topography. Most of the park space would benefit from good views of the surrounding hillside and out over the Valley.



**(E) SCHOOL SITE WITH PLAYFIELDS (TIMING TBD)**

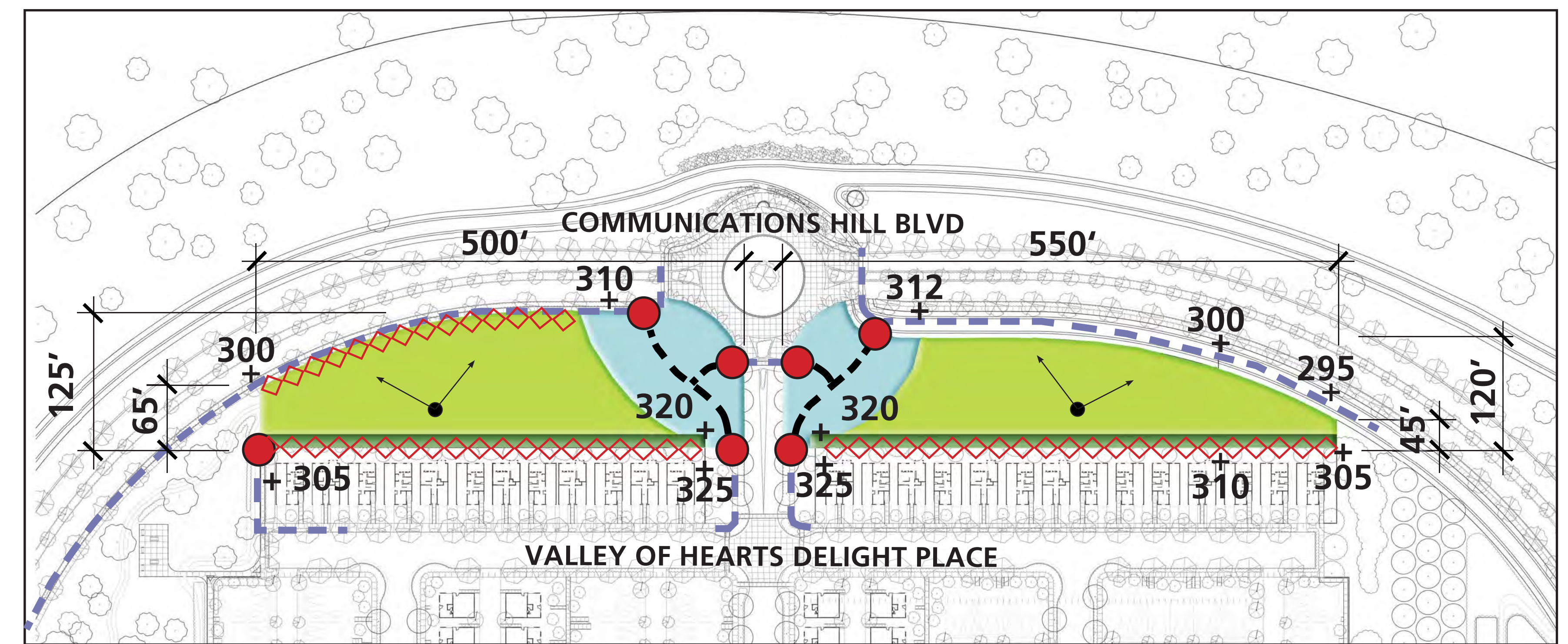
Area: 4.0 Ac

- Possible Amenities:
- BBQ Area
  - Par Course/Trail Circuit
  - Basketball Court
  - Sand Volleyball Court
  - Open Playfields/Structured Playfields
  - Stepped Seating Area
  - Community Orchard Planting

Narrative: The largest relatively flat, open recreation area within the project is adjacent to and contingent upon the intended buildout of a school. This area is between Communications Hill Blvd and the 'Tower Park' site. The space would be ideal for hosting programmed sport fields and courts associated with the school and benefiting both Communications Hill residents as well as school users.

It is also adjacent to the Village Center area which would suggest its interface be welcoming to community gathering uses and other communal activities such as large scale seating, recreation opportunities and possibly orchard/gardens.

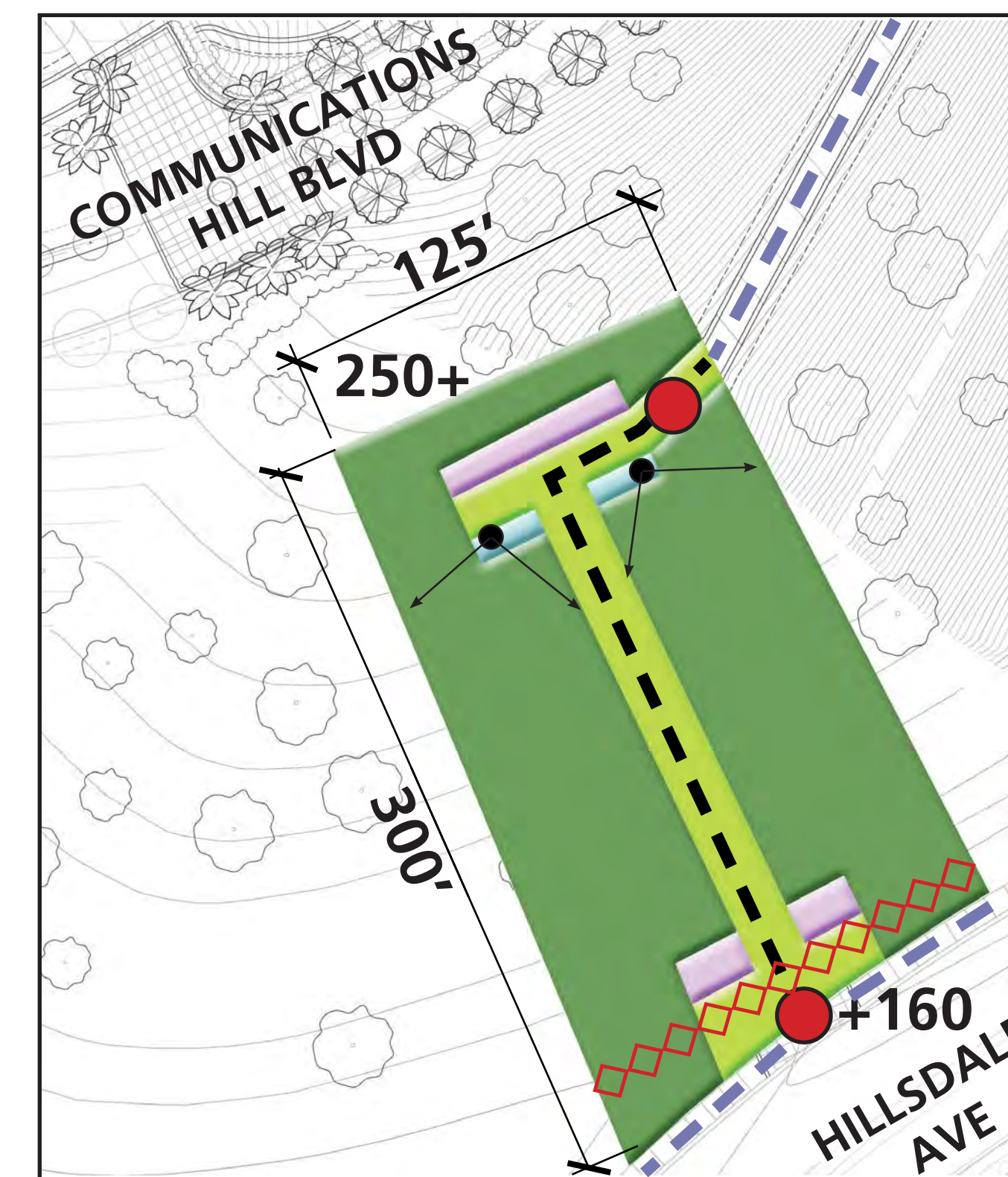
Topography to the South and West form natural buffers between the recreation area and neighboring streets. Creative land forms and/or planting would help buffer the Communications Hill Blvd edge. The rec area should be open access to both the community and potential school users.



**(F) HILLCREST OPEN SPACE\* (PHASE I & II)**

Area: 2.25 Ac

- Possible Amenities:
- Trail Circuit
  - Open Lawn Play Area
  - Viewing Area
  - Play Equipment Area (ages 6-12)
  - Rose Garden
  - Interpretive Signage



**(G) HILLSDALE FITNESS PARK\* (PHASE I)**

Area: 0.5 Ac

- Possible Amenities:
- Par Course/Trail Access
  - Exercise Equipment
  - Shade Structure
  - Additional On-Street Parking
  - Overlooks with Interpretive Signage
  - Stair
  - Spur Trail Access

Narrative: This area is a link between the multi purpose trail and Hillsdale Avenue. Due to its location on a steep hillside slope, the primary infrastructure in this park is a set of stairs with activated landings and possibly a small entry plaza at the bottom adjacent to Hillsdale Avenue and on-street parking spaces.

**\* New Rec Area and Street Names Pending - not formally approved by Council**

**LEGEND**

- ACTIVE AREA
- BUFFER ZONE
- PASSIVE AREA
- CHILDREN'S PLAY AREA
- EXERCISE AREA
- PARK CIRCULATION
- PUBLIC CIRCULATION
- POINT OF ENTRANCE
- PROHIBITIVE GRADES
- VIEW OPPORTUNITIES



KEY MAP N.T.S.

**COMMUNICATIONS HILL**

**PARKLAND FACILITIES EXHIBIT**

JANUARY 2015

**PARK & OPEN SPACE AREAS**



**TRAIL**

**Area:**  
 Phase 1: 30,000 S.F.  
 Phase 2: 69,600 S.F.  
 Phase 3: 31,320 S.F.  
 Phase 4: 44,040 S.F.

**Features:**

- 10' / 12' Wide, 2' Shoulder, Each Side
- 2% Maximum Cross Slope
- Overlooks with Interpretive Signage

**Exclusions:**

- Stairs
- Parking
- Restroom
- Lighting
- Certain Property Encumbrances

**TRAIL & STAIRS**

**COMMUNICATIONS HILL**

PARKLAND FACILITIES EXHIBIT

JANUARY 2015